

BREAST CANCER AWARENESS WITHIN THE AANHPI
COMMUNITIES

BREAST CANCER STATISTICS FOR AANHPI WOMEN:

- BREAST CANCER SCREENING RATES IN AA WOMEN ARE LOWER COMPARED TO OTHER POPULATIONS
- BREAST CANCER IS THE SECOND LEADING CAUSE OF CANCER DEATHS IN ASIAN WOMEN
- SINCE 1992, BREAST CANCER INCIDENCE IN ASIAN AND PACIFIC ISLANDER WOMEN HAVE INCREASED 1.5% PER YEAR.
- BETWEEN MARCH 15-JUNE 16, 2020, THERE HAVE BEEN 285,000 MISSED MAMMOGRAMS IN THE U.S.

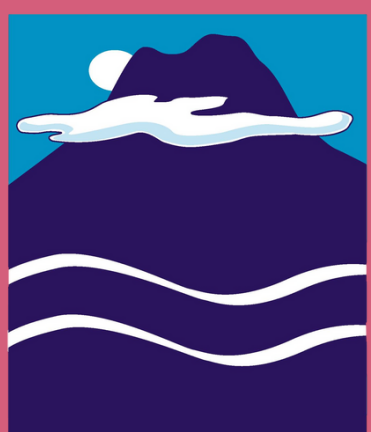
Call To Action:

Cancer Screenings Saves Lives! To find low-cost cancer screening programs near you, visit
www.cdc.gov/cancer/nbccedp/screenings.htm

SCHEDULE A MAMMOGRAM SCREENING TODAY.

Source:
American Cancer Society Breast Cancer Facts and Figures 2019-2020
American Cancer Society 2020 Facts and Figures
<https://www.ncbi.nlm.nih.gov/pmc/articles/PMC6941147/>
Epic Health Research Network

Asian Pacific Partners for Empowerment, Advocacy and Leadership
Learn more at appealforhealth.org



APPEAL